

Portfolio

Elina Maarit Mitrinen



Contents

- 1 Paintings, drawings & doodles
- 2 3-dimensional
- 3 Pattern & Colour



Paintings,
drawings
& doodles

Electricity

– painting with acrylics, 2006



Childhood

– painting with acrylics, 2005





Mother
– mixed media, 2005

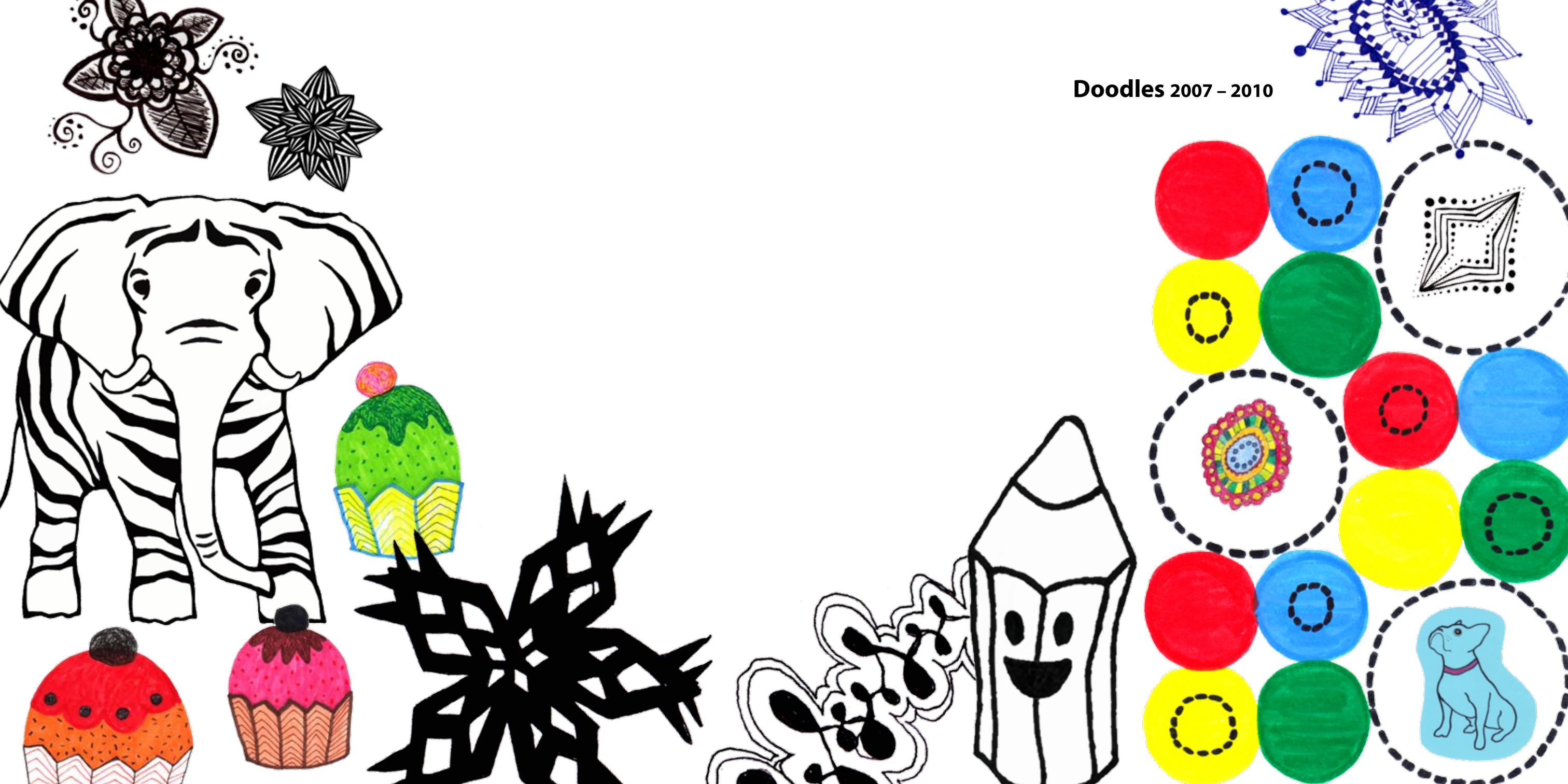


Sister
– mixed media, 2005

On the right: **Textile of the year**
– painting with gouache, 2003



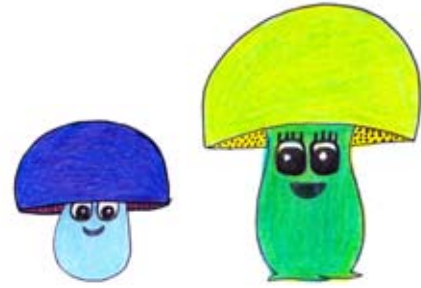
Doodles 2007 - 2010





Doodles 2011





Doodles 2011





3-dimensional



Kankaalla, 2005

An exhibition project for the Lusto forest museum in Punkaharju, Finland, under the theme "forest and textile". Exploring nature's own materials and creating 3-dimensional surfaces, small wall elements – elements of the forest for city people. Materials used: various natural materials collected from different forests in Finland, glue and water.





Bubble-lampshade, 2005

- A woven lampshade made of nylon yarn and tobacco paper.

Experimenting with different materials to be used in the lampshade: sellophane, fishing line, paperyarn, biodegradable bin bags.



Photos: Jarkko Virtanen

Bubbly sunday brunch

– final work for Bachelor of Arts degree, **2006**

A cake-shaped sofa inspired by and dedicated to moments of enjoyment, pleasure and pure everyday luxury. With hand-printed fabric that can be easily cleaned by just wiping with a wet cloth, and ergonomic visco-elastic foam filling to reduce pressure.



Photo: Jarkko Virtanen



Photo: Kimmo Hytönen



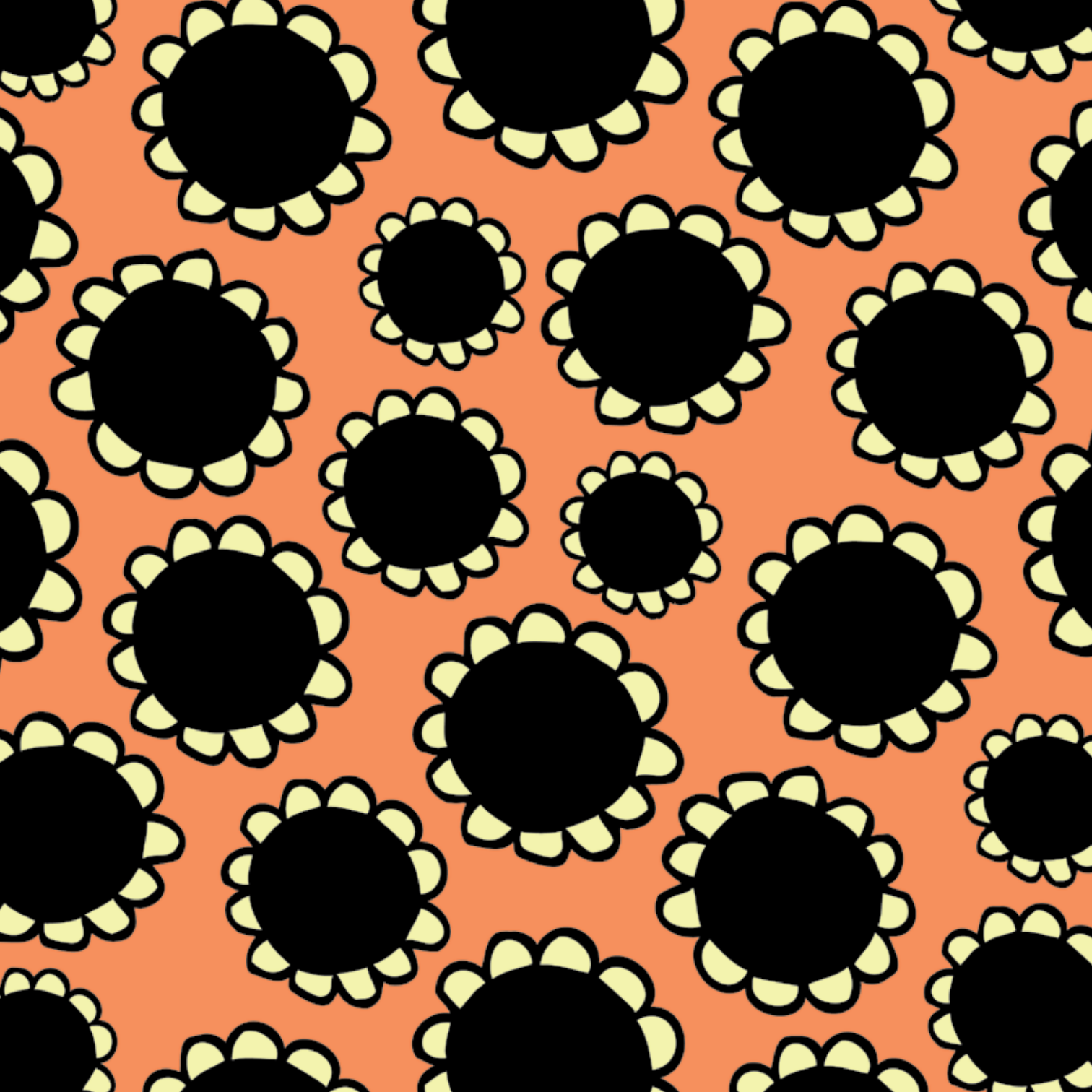
Photos: Anu Akkanen

Heart-Donor

– by Laura Beloff & Erich Berger with Elina Mitrunen, 2007

Heart-donor is a wearable art work concerned with presence, intimacy, and memory in everyday life. The vest is made of custom built hardware/software, mobile phone and textile. Concept and idea by Laura Beloff and Erich Berger. My role in the project was to help design and make the vest.





Pattern &
Colour

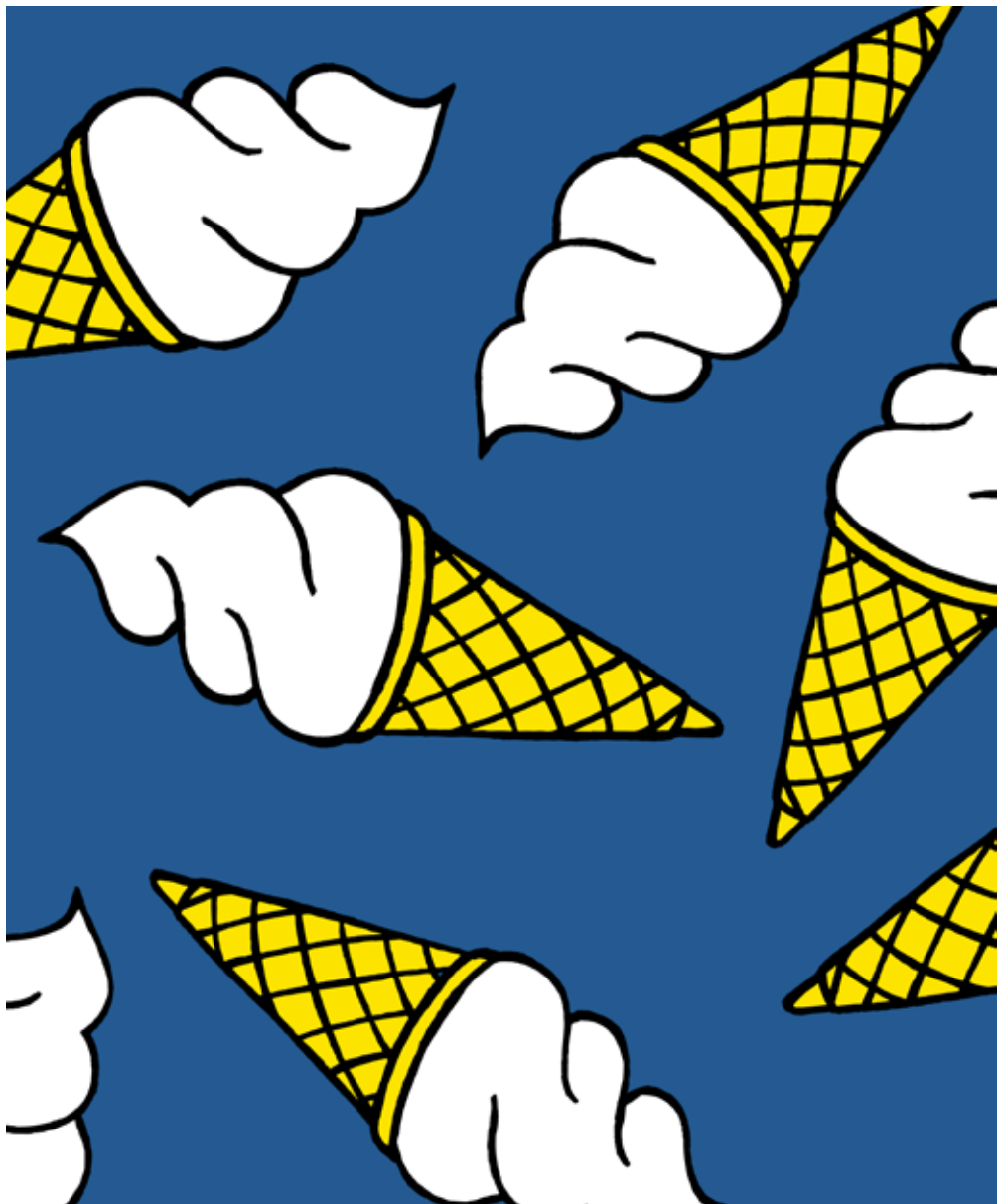


Pattern Lab, 2008 – 2009

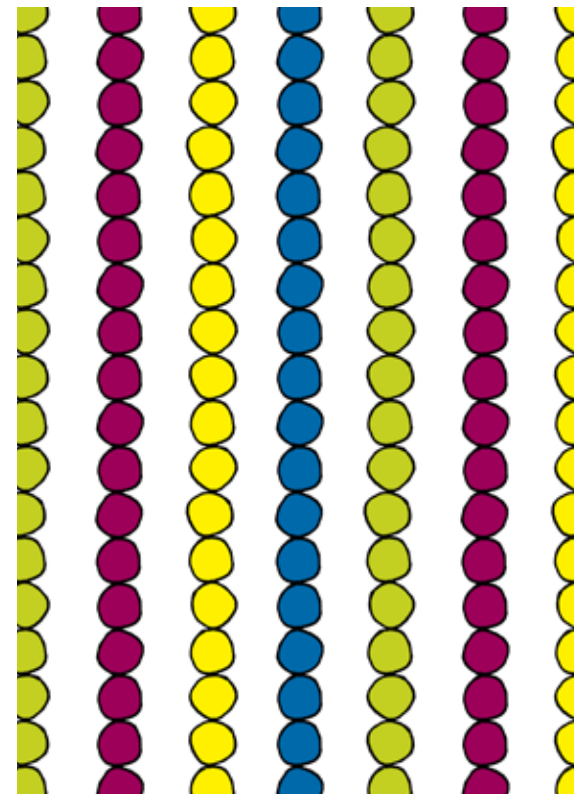
A pattern design project that was directed by design director and lecturer Maarit Salolainen. The three themes and colour palettes on which the entire collection is based on have been created by a group of ten students. Each student made their own collection of 30 prints under each theme and colour group.

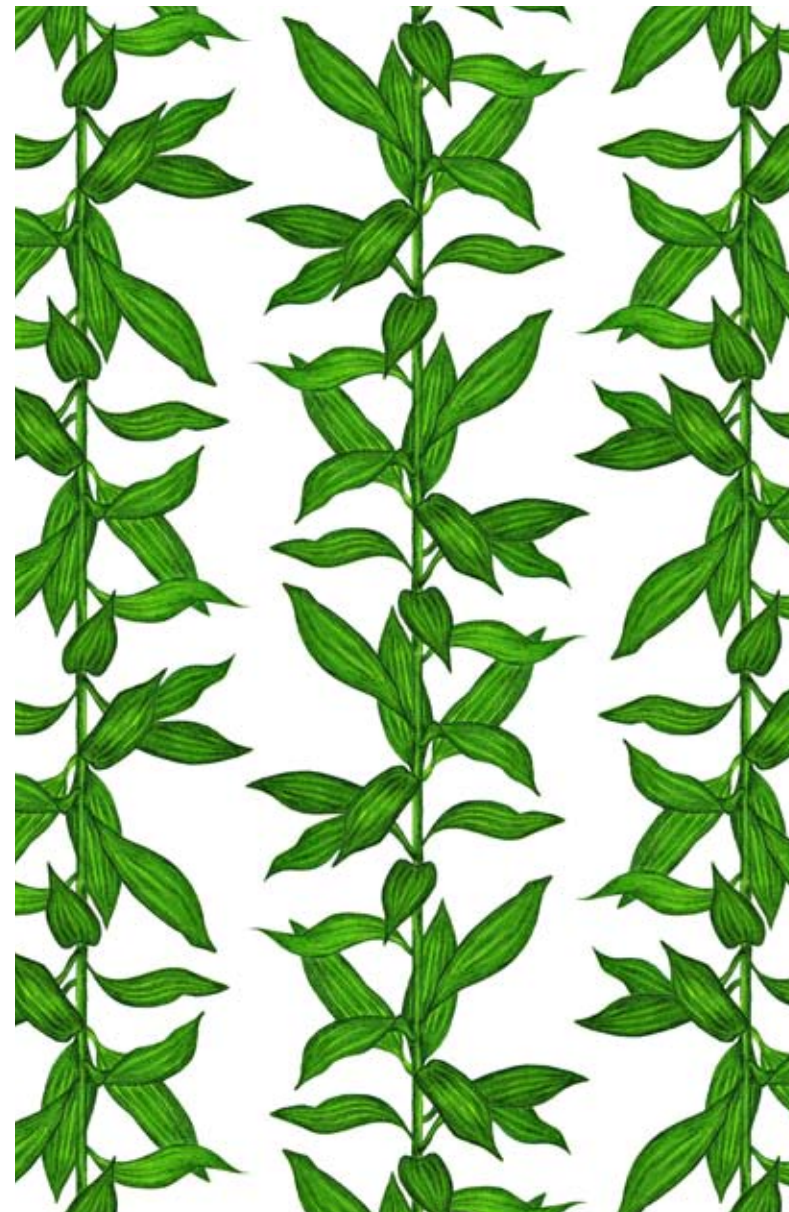
The collection was called KinoHelsinki. The three themes in the KinoHelsinki -collection are based on fictive movies, each one telling their own story in their unique visual language and colours. The KinoHelsinki collection was presented at the Heimtextil fair in Frankfurt in January 2009.

On the next pages I will present some selected pattern designs from my KinoHelsinki -collection.

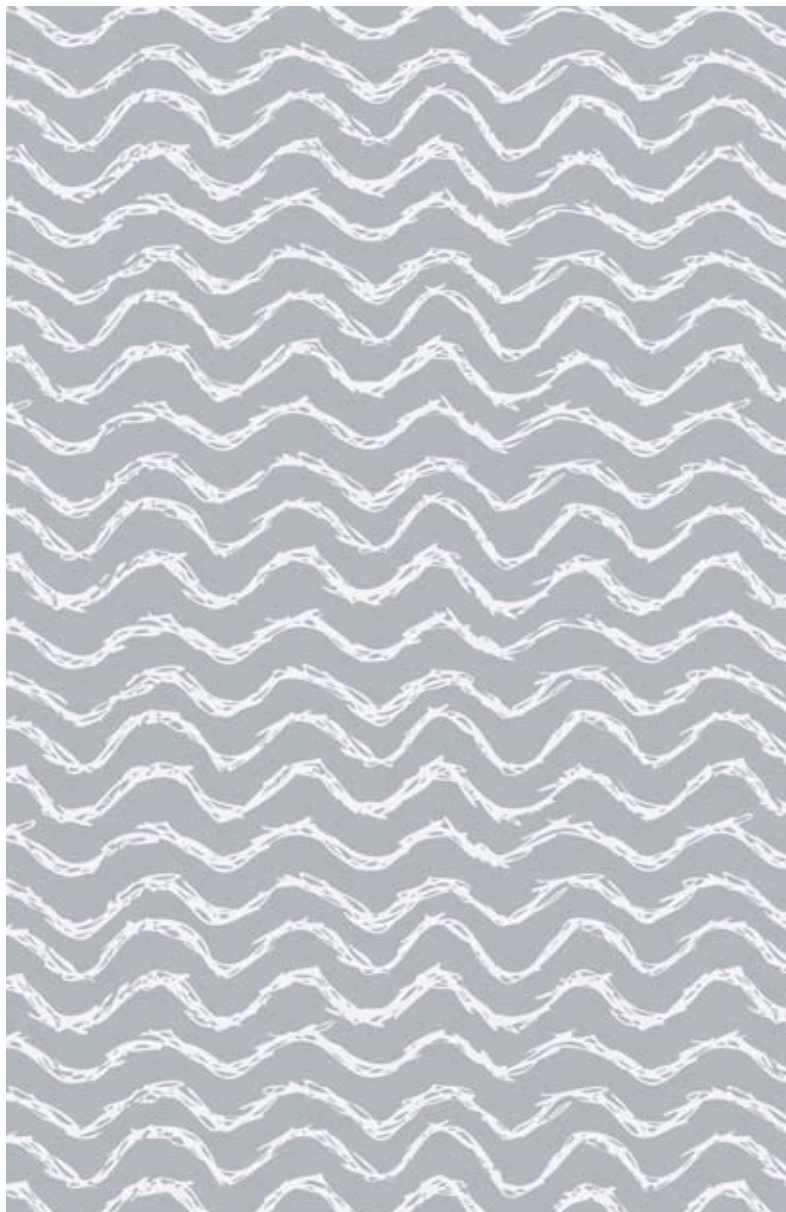


Ice cream -series





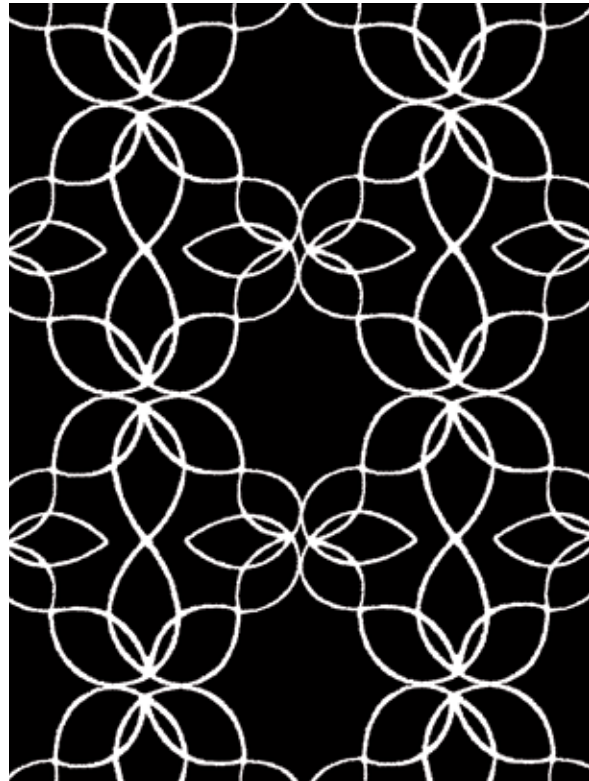
Lily-series



Owl -series

Designs for Para, Italy, 2009

Pattern designs made during internship at Para S.p.a. These designs were included in the 2009 main collection of Para. The designs were presented amongst the rest of the collection at the Proposte fair spring 2009 at lake Como.





MA thesis, final work for Master of Arts degree, **2009 – 2010:**

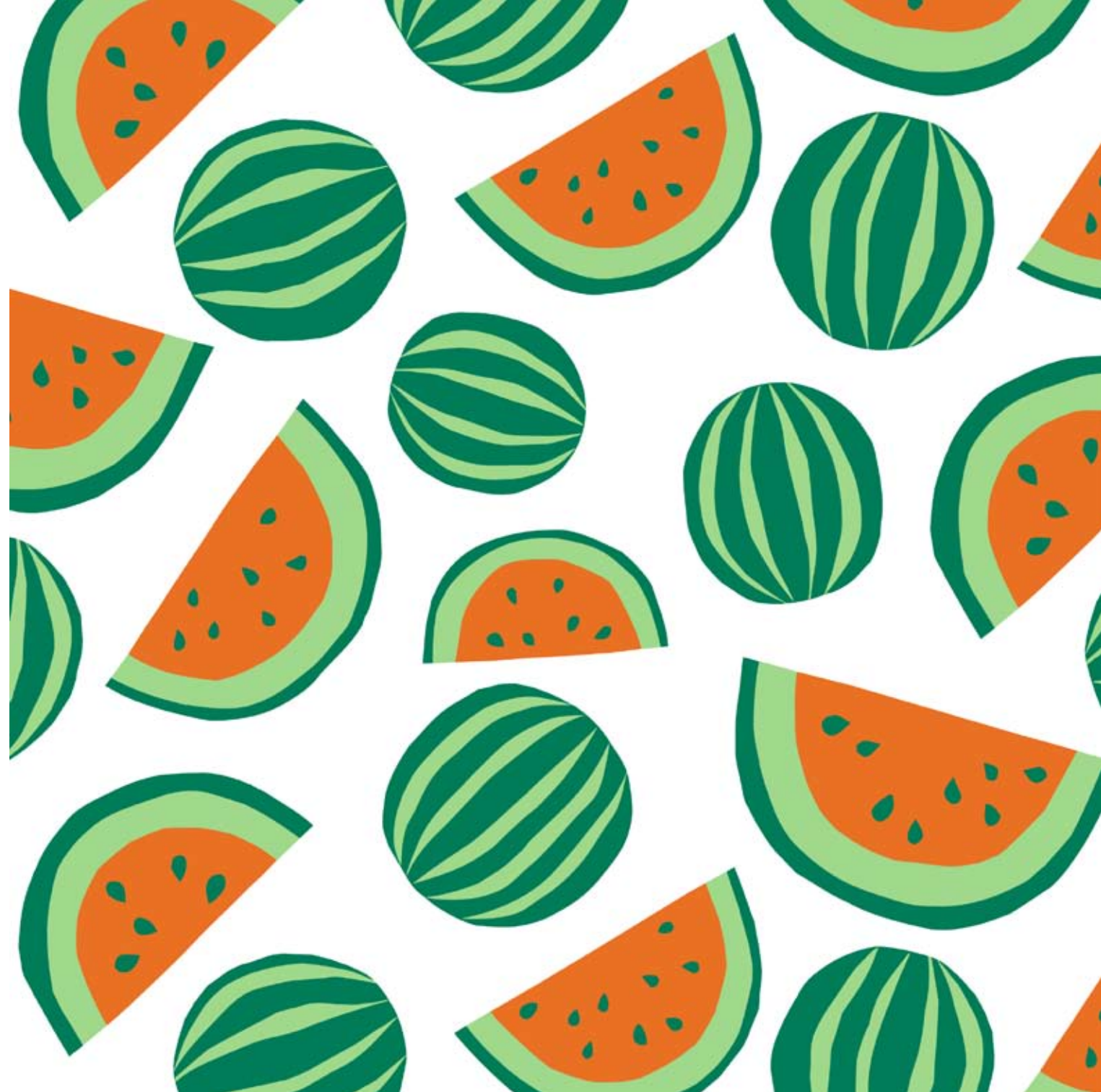
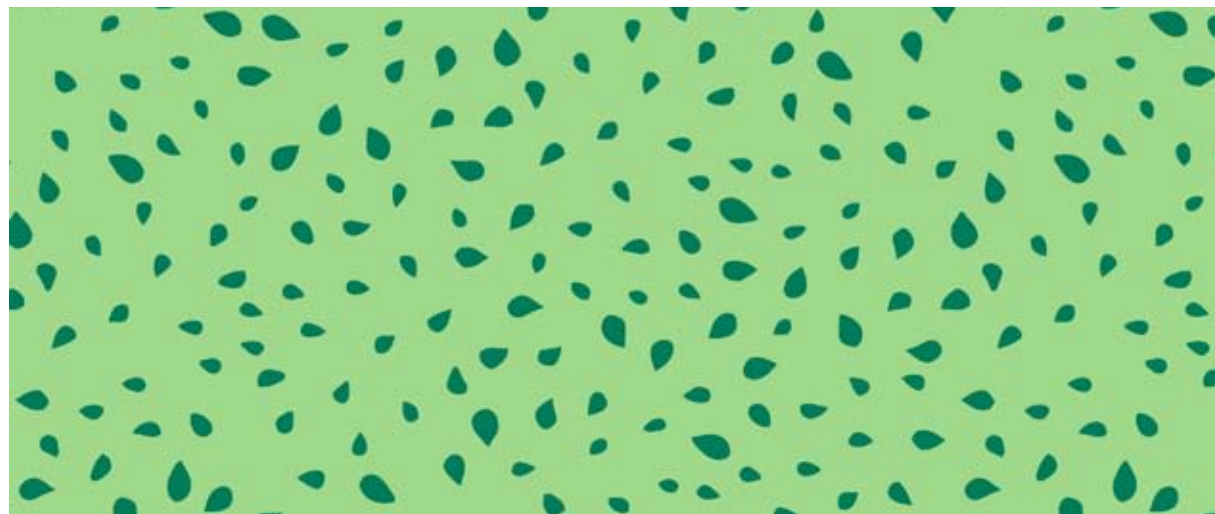
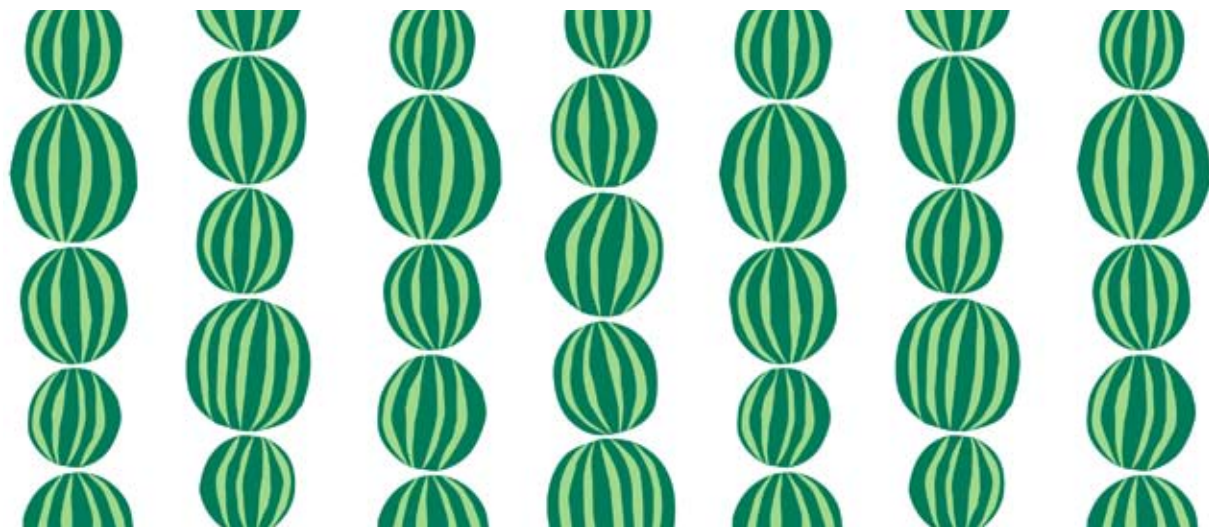
Patterns meeting users – a collection of pattern designs for children, designed based on a probe study

The subject of my thesis was to investigate how experimental qualitative methods of user study can be applied and utilized in the area of pattern design. I have carried out a user study of 11-year old children using design probes as my method of research.

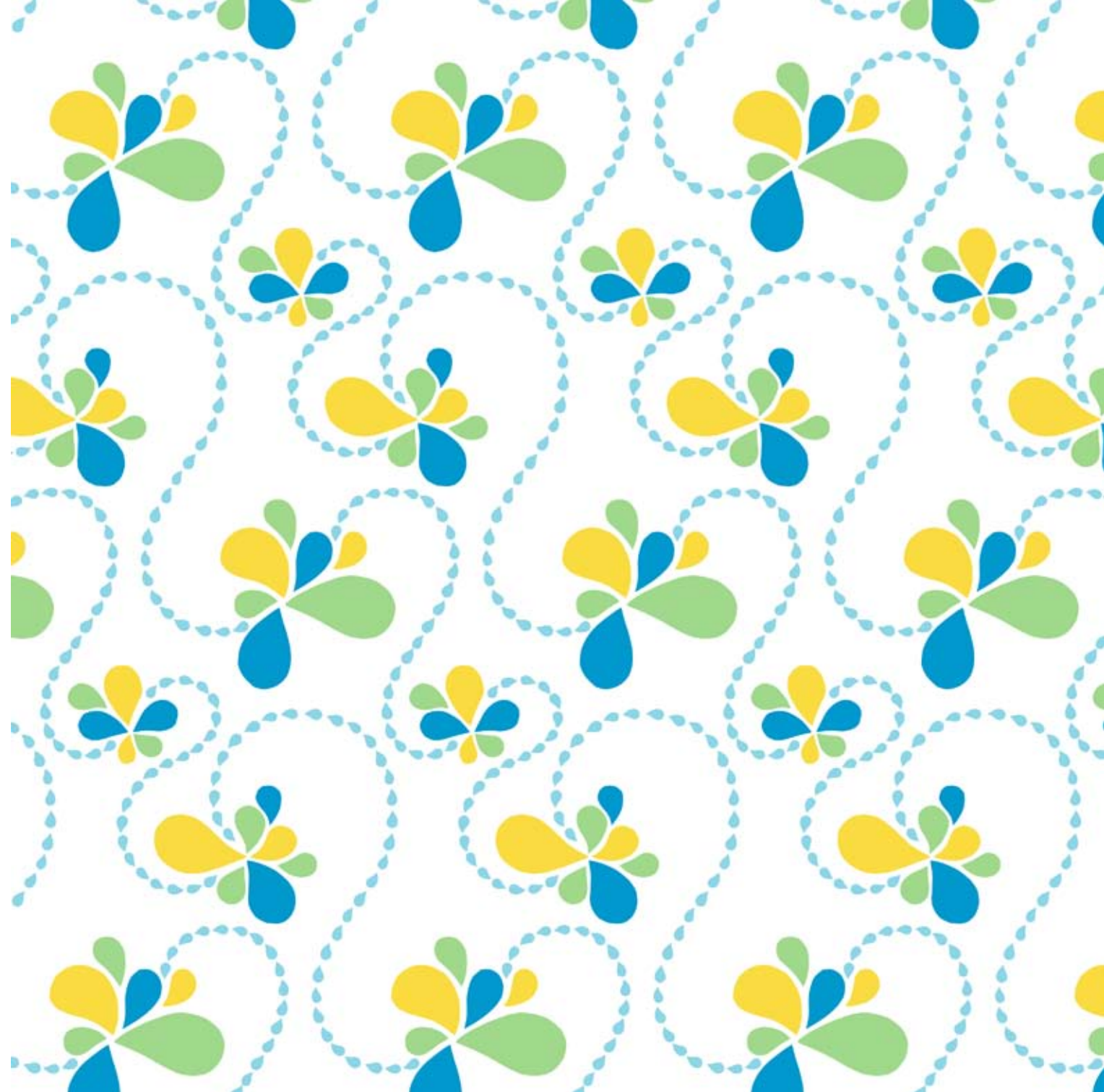
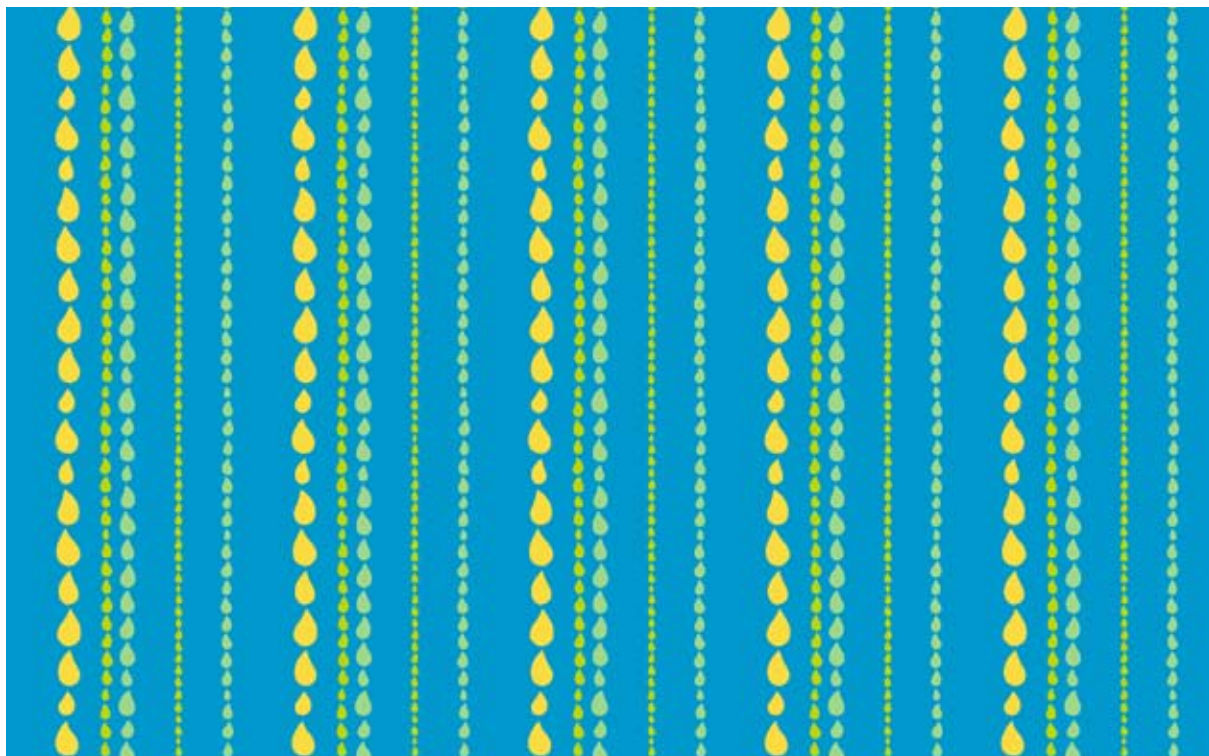
Based on the verbal and visual material and information acquired from this study, I have designed a collection of patterns for home interior use, specifically childrens rooms. The collection consists of ten different patterns under three different colour charts and themes.

On the next pages I will present the final collection. First I will present the colour chart and mood board of each theme, followed by the pattern designs.

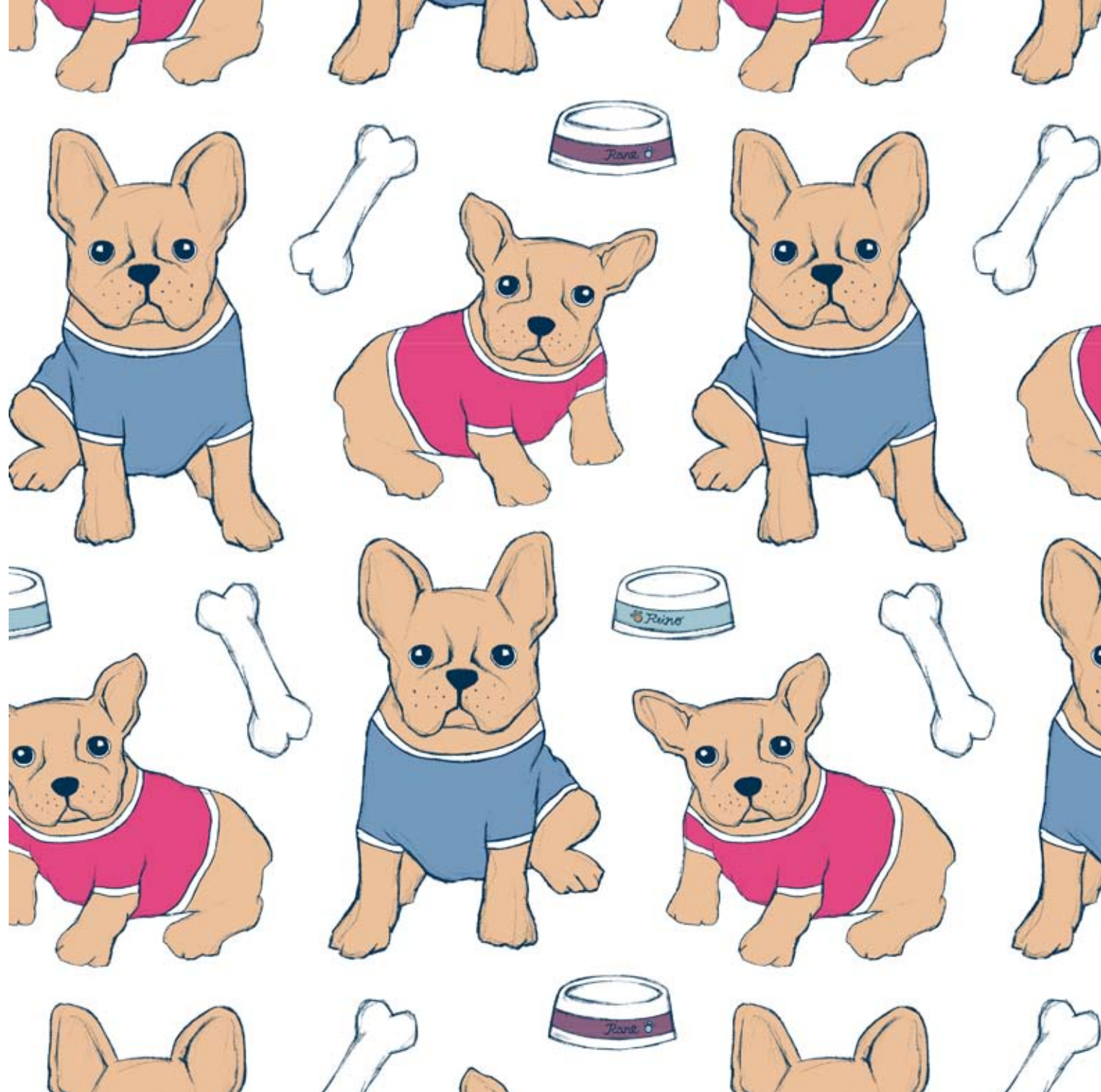
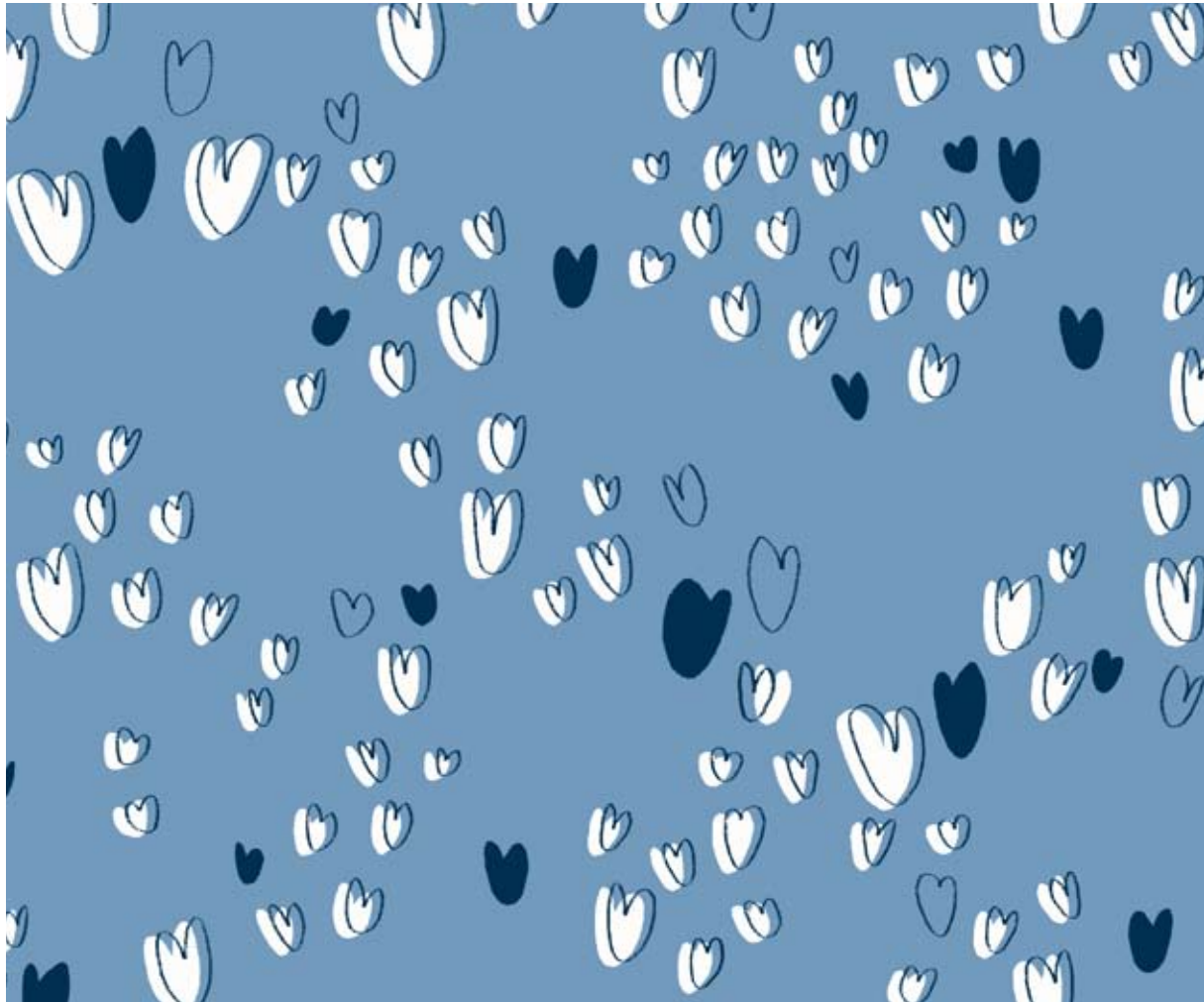
Watermelon -series



Waterfight and Summer rain -series

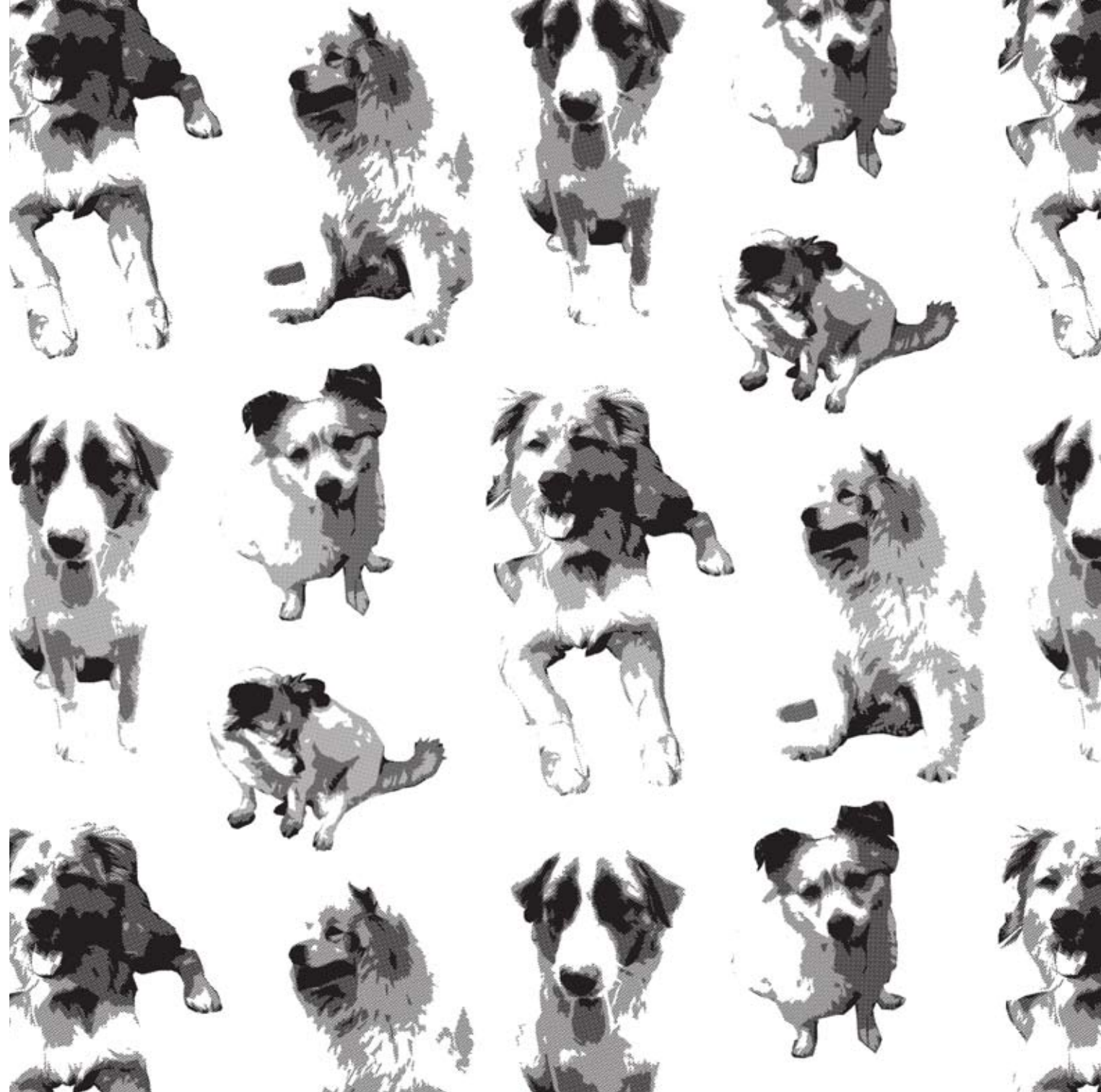
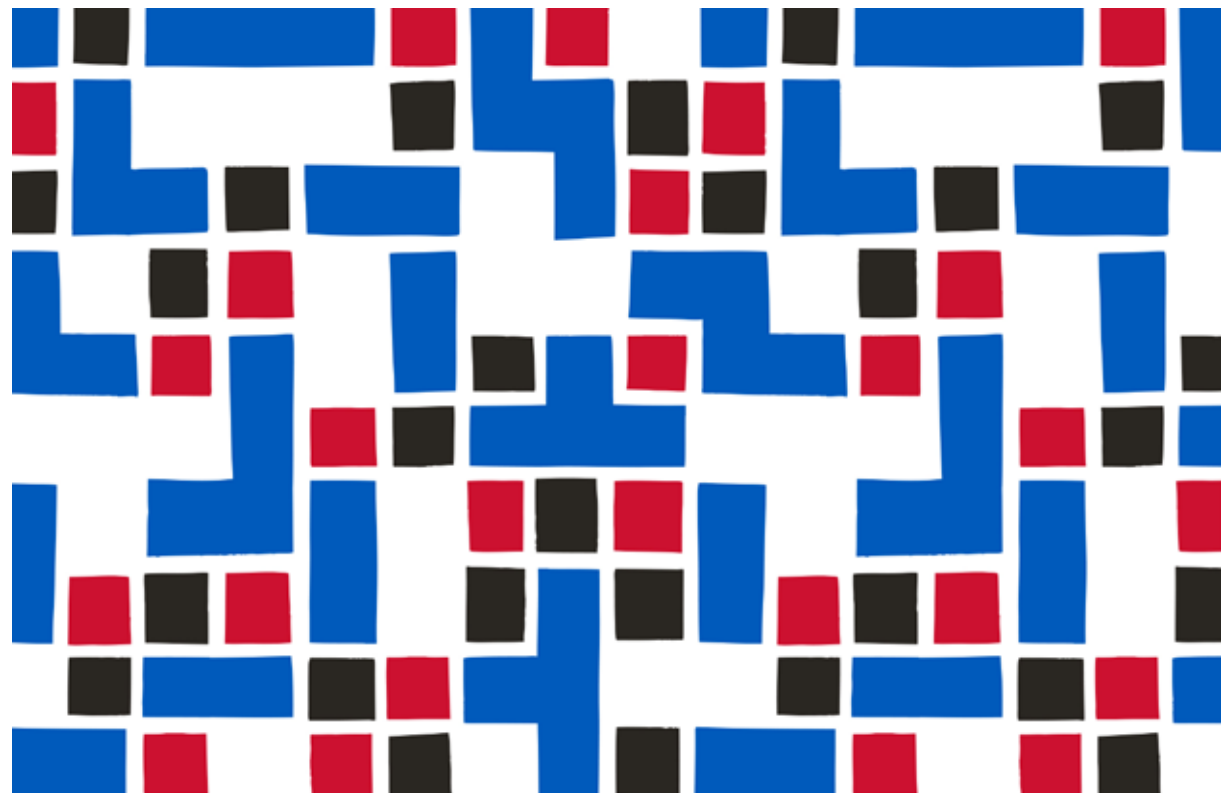


Dogs and hearts -series

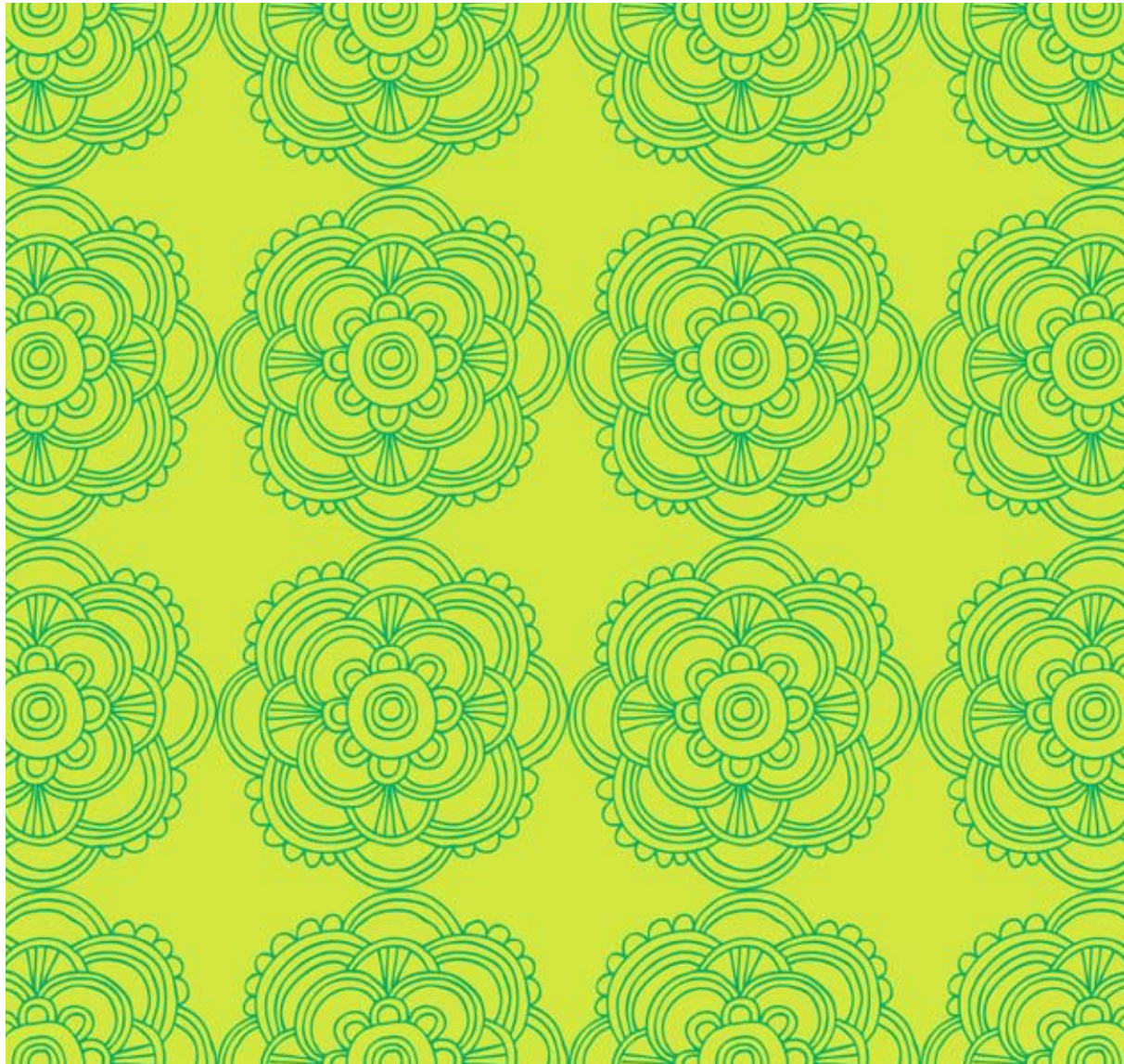


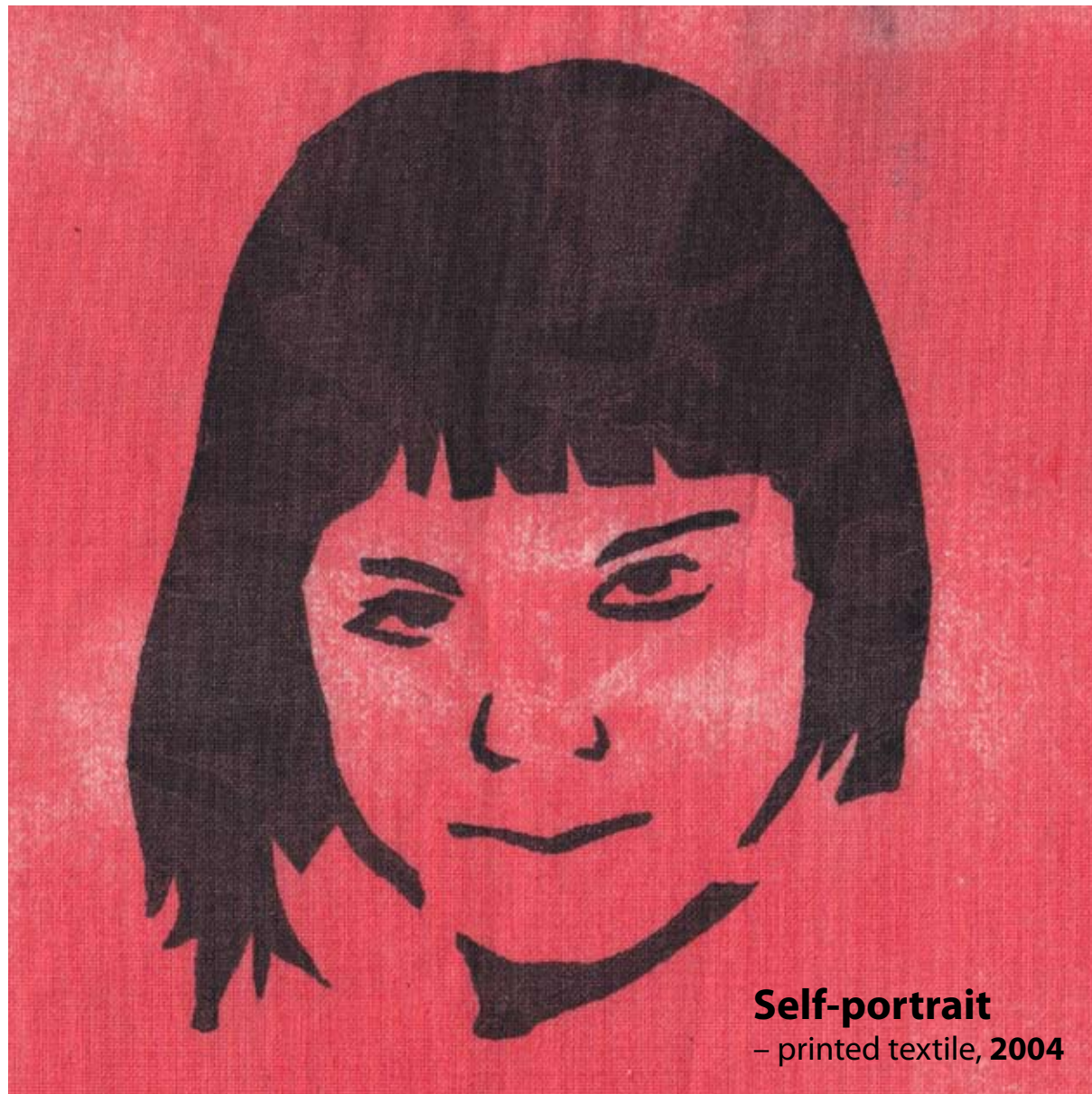


Game world -series



Patterns 2011





Self-portrait
– printed textile, 2004

Contact:

Elina Maarit Mitrunen

Lutherinkatu 8 C 24

00100 Helsinki

e-mail: emitrone@gmail.com

phone: +358 (0) 45 633 4541